

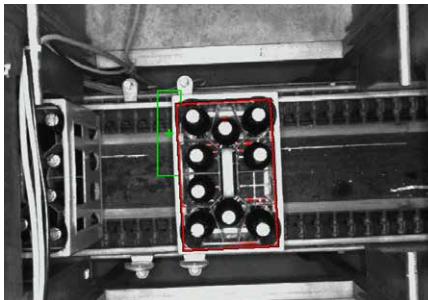
Optical inspection + Control modernisation

This is how we ensure the quality of your crates

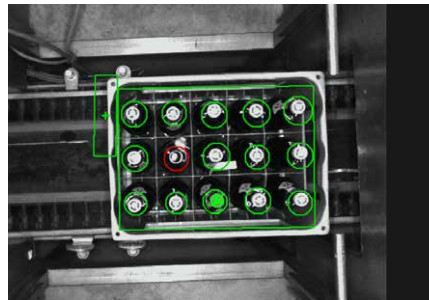
Who hasn't experienced this: despite prior checks, crates with missing or unsealed bottles keep leaving the factory. Subsequent complaints are the result.

Our solution: we supply a testing system or retrofit your existing system so that crates can be reliably checked for completeness and the presence of the cap on the bottle and, if necessary, ejected.

We use state-of-the-art control and optical inspection technology for this purpose.



The camera checks the crates for completeness.



The camera checks the presence of the cap on the bottles.



Only perfect crates leave your factory!

Your benefits

- + **Feasibility analysis and determination of a cost-efficient solution**
- + **Integration of testing technology into existing systems**
(also third-party manufacturers)
- + **Delivery of a new testing system**
- + **Control system modernisation**
S7 control system with touch panel in co-operation with Pütz Prozessautomatisierung
- + **Various checking options:**
Presence, alignment, position determination, size check, text evaluation of codes or normal text
- + **Simple teach-in depending on the application thanks to AI support:**
Only good and bad parts need to be taught in, no manual definition of characteristics required
- + **Fast support via remote maintenance possible**

Everything from a single source

Take advantage of the **synergy effects** that result from our integration into the **Pütz Group**!

In addition to machines and plants for the beverage industry, we are able to equip your plant with the most modern control and vision technology.



Whether for a tailor-made, complete turnkey solution or individual components – we have the experience and the technology you need!



Machines for swing stopper bottles:

Swing stopper closing machine with Hygienic Design

Swing stopper installation machine

Swing stopper opener

Swing stopper inspection machine

Rubber seal changer

etc.



And:

Chamber pasteurizers

Unpacking and packing machines

RICO long-term bottle grippers

Less paper! More digital!

Subscribe to our News + Innovations in an electronic format and help us to protect the environment.



RICO GmbH
Ferdinand-Porsche-Straße 5
73479 Ellwangen
GERMANY

info@rico-maschinenbau.de
Phone: +49 7961 56499-0
Fax: +49 7961 56499-300
www.rico-maschinenbau.de